

LED STREET LIGHT COB

Description & Features

- Material case : aluminum painted in electrostatic field
- Disperser : Transparent polycarbonate 3mm protected UV
- Color case: standard: grey, other colors available on demand
- The street LED projector has a modern design, low energy consumption and emits an elliptical-asymmetric light beam..
- Designed and manufactured in Romania.
- Color rendering index: 80 for WN and WW and 70 for WH.
- Specially designed lenses.
- High power COB Bridgelux LEDs with a lifetime of 50,000 hours.
- The light flow is 115-120 lm / W, whether is white neutral or cold white
- The clamping system allows the projector to rotate by +/- 45 degrees
- Focusing is done with silicone lens resistant to external conditions
- it is very flexible, it can be fitted on demand with various types of focus depending on the height at which it is mounted



Certificate

- CE, RoHS

Warranty

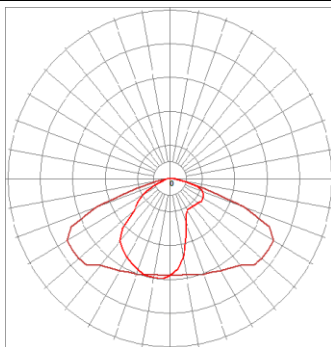
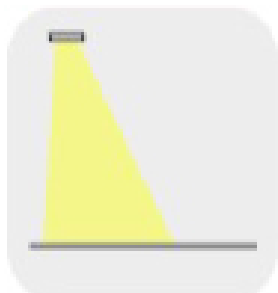
- 5 Years warranty

Specifications

| | |
|-----------------------------|-----------------------------|
| Model No.: | LED STREET LIGHT COB |
| Power Consumption/LED: | 100W |
| Input Voltage: | 90-250V |
| Operate Frequency: | 50-60Hz |
| Lumens Output: | 115-120LM/W |
| Led Brand | Bridgelux (Isolated Driver) |
| LED Type | COB |
| Color Temperature: | 3000K, 4500K, 6000K, |
| CRI: | >80 |
| Beam Angle: | 170° |
| IP Rated: | IP65 |
| Power Factor: | 0.95 |
| Total Harmonic Distortion: | <20% |
| Working Temp.: | -20°C ~ +40°C |
| Storage Temp.: | -30°C ~+ 50°C |
| Lifespan L70(H): | >50,000 Hours |
| Impact protection | IK10 |
| Driver | Meanwell |
| Electrical insulation class | I |



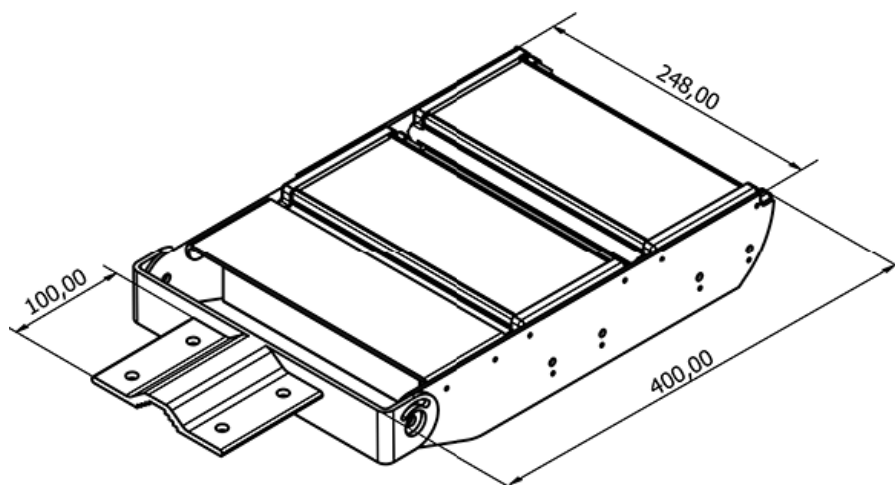
Street Focus (S)



Dimensions & Weight:

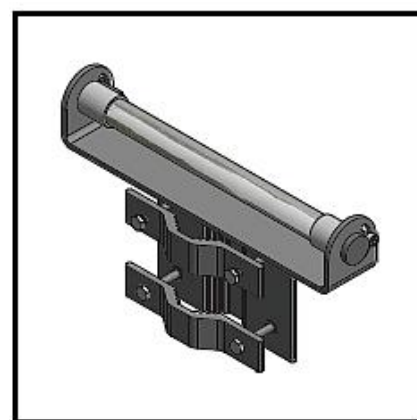
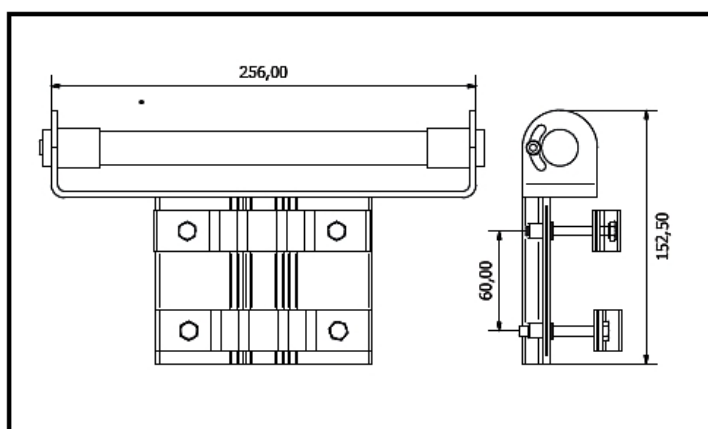
100W

Weight :4.8kg

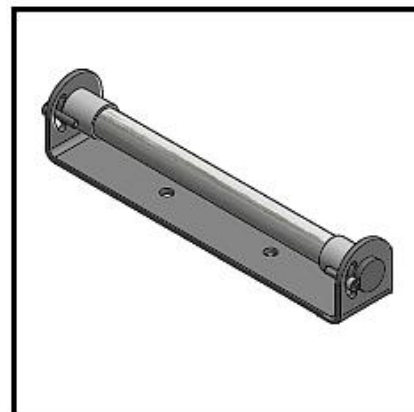
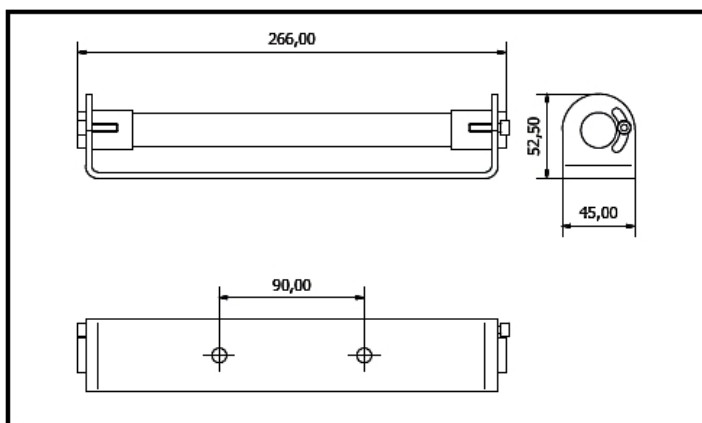


Mounting system

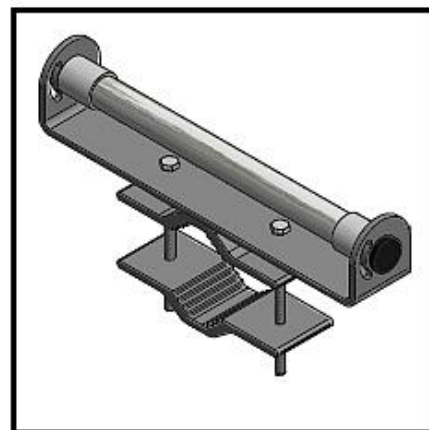
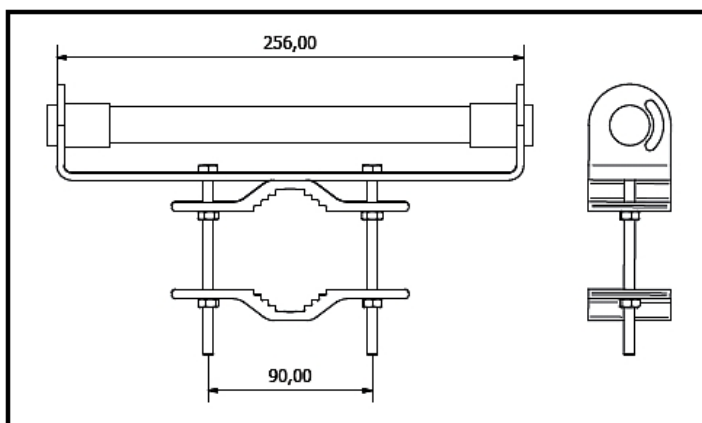
A Type
Street pole
Fitting for
horizontal
pipe



B Type Wall fitting



C Type Street pole Fitting for vertical pipe



Warranty Policy

- Standard 5 years after purchase under normal usage